




**THANK YOU
TO OUR PARTNERS**



City of Bondurant
Greater Des Moines Partnership
East Polk Innovation Collaborative (EPIC)
MidAmerican Energy
Iowa Department of Transportation (IDOT)
US Army Corps of Engineers

FULFILLMENT CENTER DESIGN PARTNERS


- Ford and Associates
- Shirk and O'Donovan
- Kraemer Consulting Engineers
- Harrington Group
- Hargis
- Braun Intertec
- Terracon



SHIVEHATTERY
ARCHITECTURE + ENGINEERING

FULFILLMENT CENTER CONSTRUCTION PARTNERS 

<ul style="list-style-type: none"> Academy Roofing ADT Allied Construction Services American Fence ASI Signage Baker Group Barron Equipment CBRE Cubic Des Moines Marble & Mantel DH Pace Elite EPCO Forrest & Associates 	<ul style="list-style-type: none"> Foundation Services Corp Gebhardt Graydaze Grimes Asphalt & Paving IES KCI Kone Lewis Construction McAninch Midwest Caulking National Property Solutions Ohio Valley Concrete O'Keefe PDM/Northwest 	<ul style="list-style-type: none"> Perficut Poindexter Premier Edge Prospect Steel Pugleasa/Arbon Equipment Ricom Shambaugh Shelters Direct Skold Speck Tri City Electric Waldinger Wildeck Inc.
---	--	---



PROJECT OVERVIEW 

FULFILLMENT CENTER 

- 703,300 SF (ground floor) Fulfillment Center, 168 ac site
- 1,000+ new full-time, full-benefit jobs created
- Features innovative technology such as Amazon Robotics
- Start Construction: October 2019
- Substantially Complete: October 2020

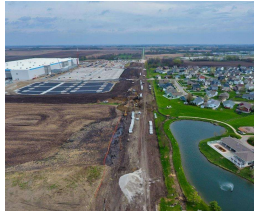




INFRASTRUCTURE IMPROVEMENTS



- 32nd Street SW
- Grant Street
- Shiloh Rose Parkway
- Hwy 65 Signalized Intersection



SHIVEHATTERY
CONSTRUCTION MANAGEMENT

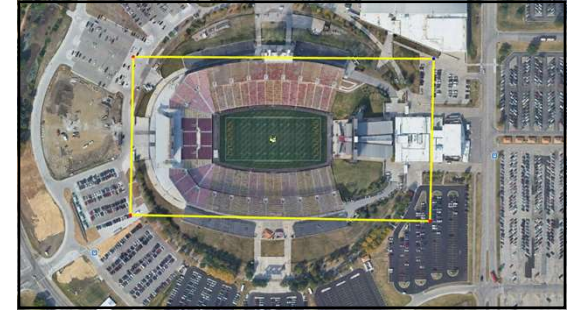
INFRASTRUCTURE IMPROVEMENTS

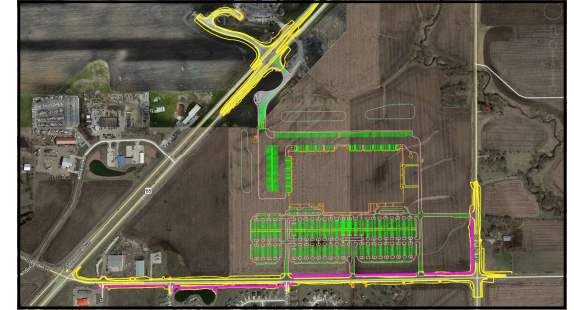
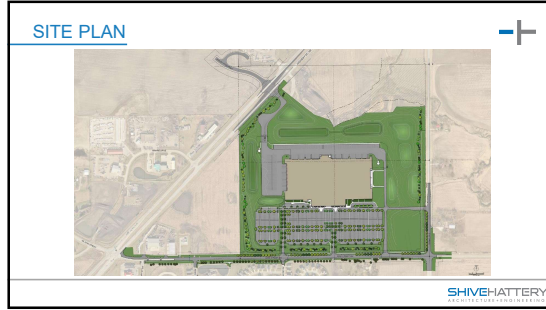


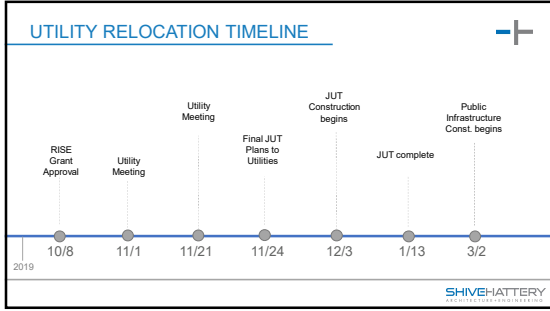
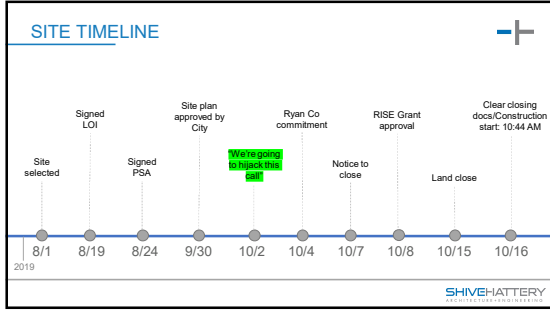
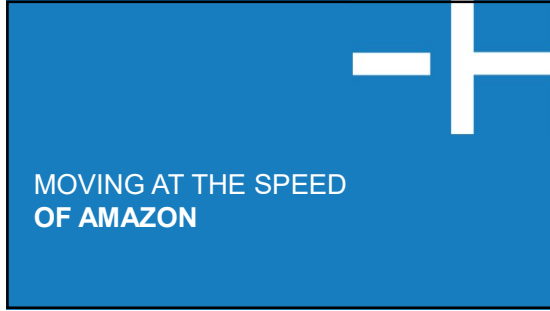
- Land Acquisition
 - 10 property owners
- Utility Relocation
 - 11 Utility Providers
- RISE Grant
- Schedule

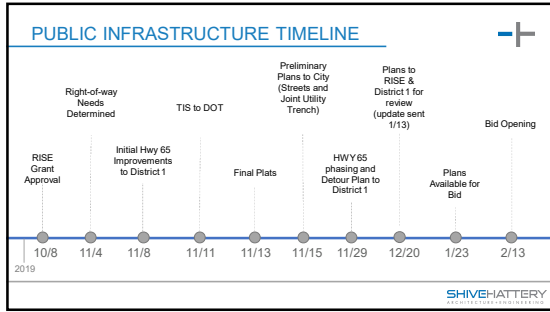


SHIVEHATTERY
CONSTRUCTION MANAGEMENT

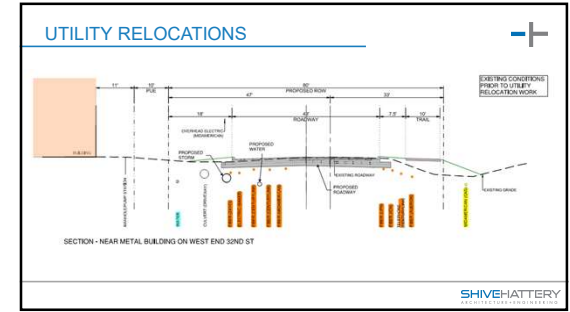


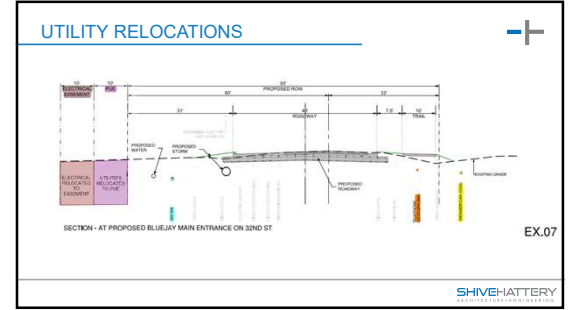
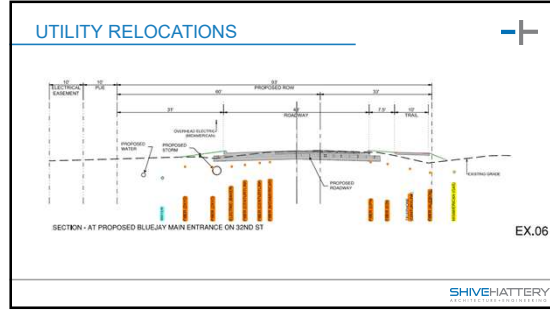
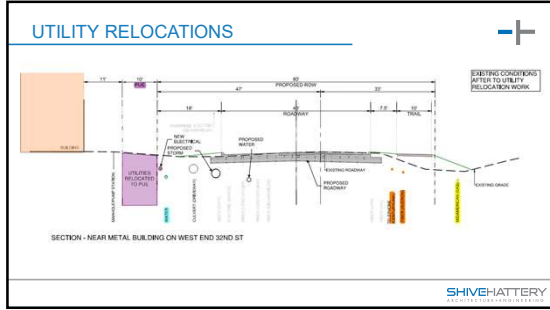


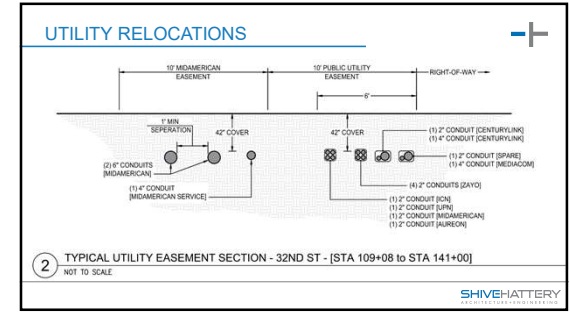
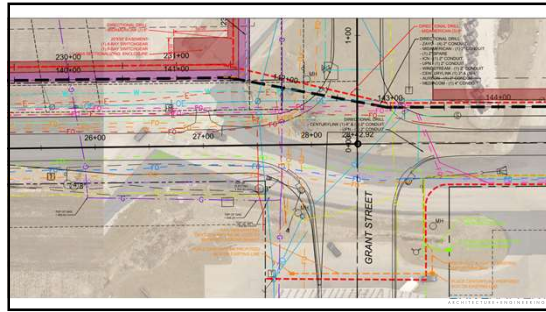
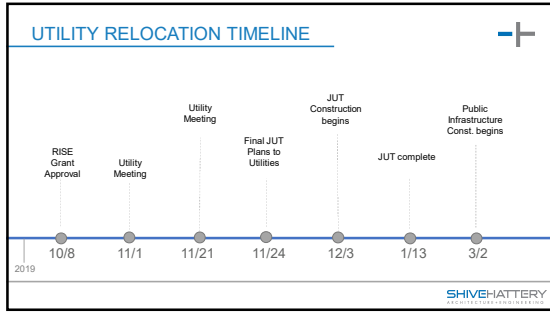


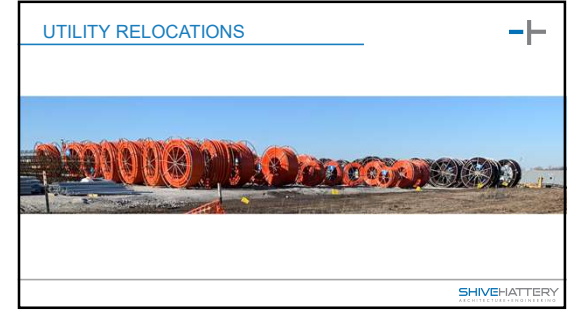
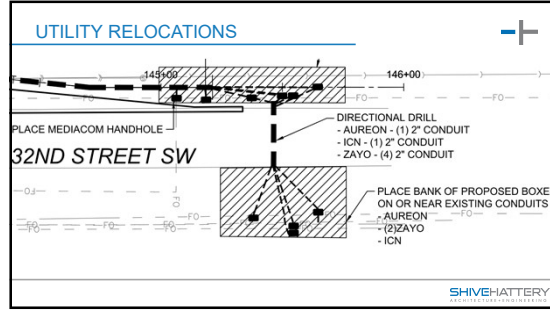
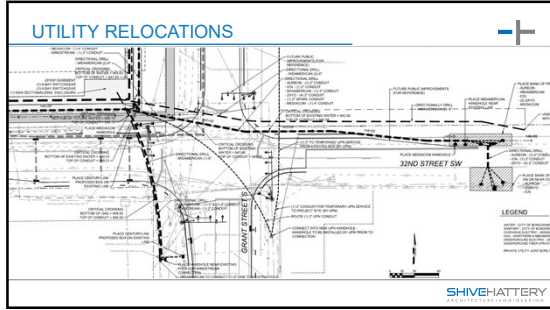


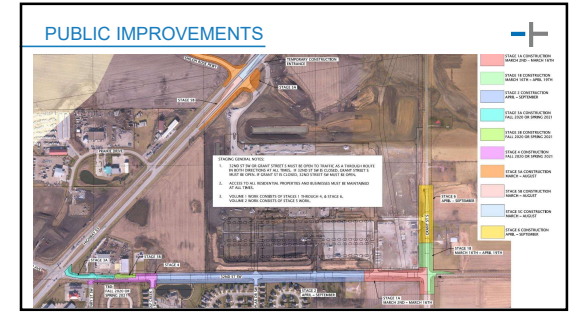
UTILITY RELOCATIONS












INFRASTRUCTURE IMPROVEMENTS 



SHIVEHATTERY
CONSTRUCTION MANAGEMENT



BUILDING CONSTRUCTION

FUN FACTS 

- 900,000 CY of Dirt Moved
- Main Structure set in 12 weeks
- 7,900 Geopiers installed
 - 35-55 feet deep
- 17,900 Total Steel Tonnage
- Concrete
 - 16,290 CY Foundation VDS
 - 14,960 CY Interior Slab on Grade
 - 36,635 CY Slab on Metal Deck
 - 20,820 SY Exterior Paving
 - 1,065 SY Curb and Gutter
- 63 Acres of Landscape
 - Plantings, seed and sod

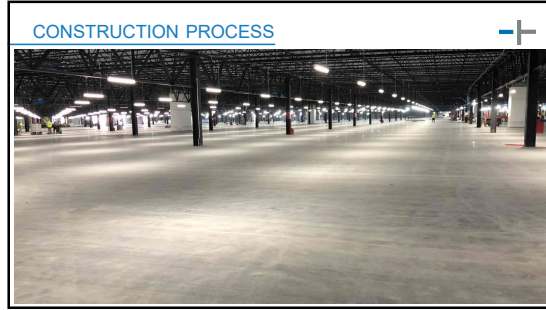


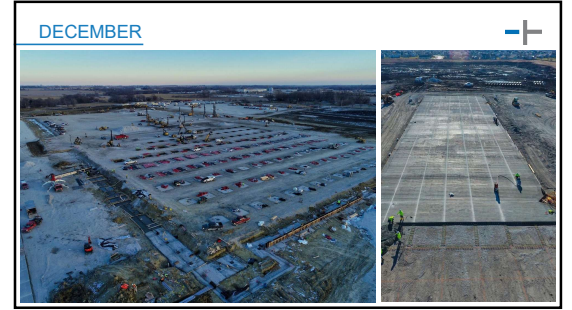
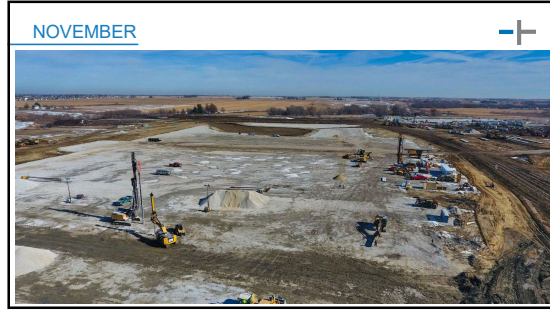
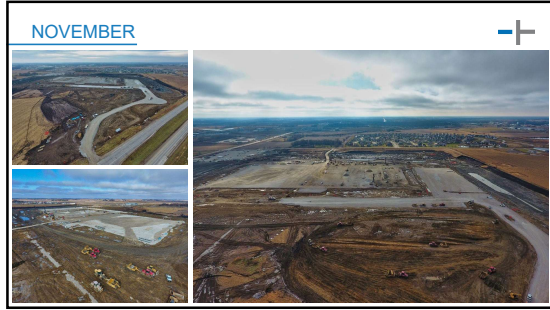
SHIVEHATTERY
CONSTRUCTION MANAGEMENT





































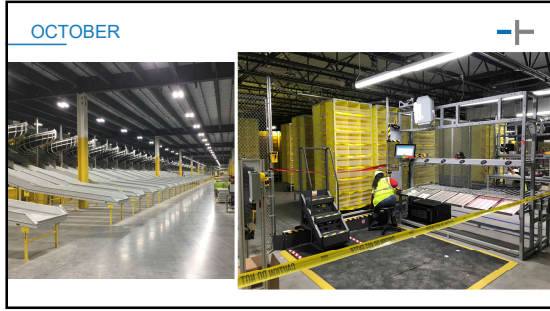


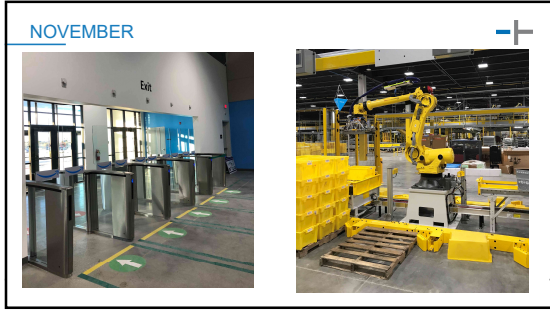


















SHIVEHATTERY
ARCHITECTURE+ENGINEERING
DES MOINES *50 years* 1972-2022

THANK YOU!
ANY QUESTIONS?
