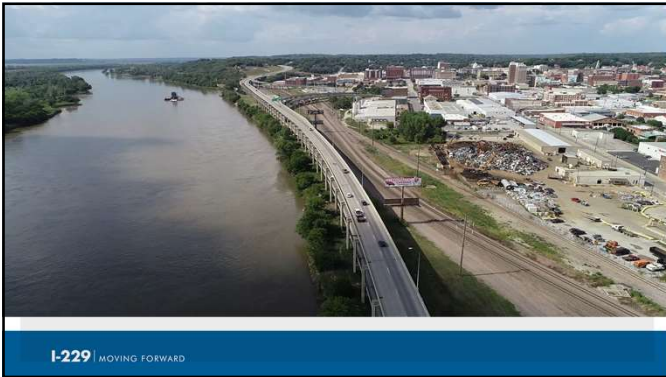


2021 Iowa Transportation Conference

The I-229 Double Decker Bridge St. Joseph, MO

Presented By: David Kocour, CER, ENV SP
Joshua Castor, PE
September 30, 2021

I-229 MOVING FORWARD



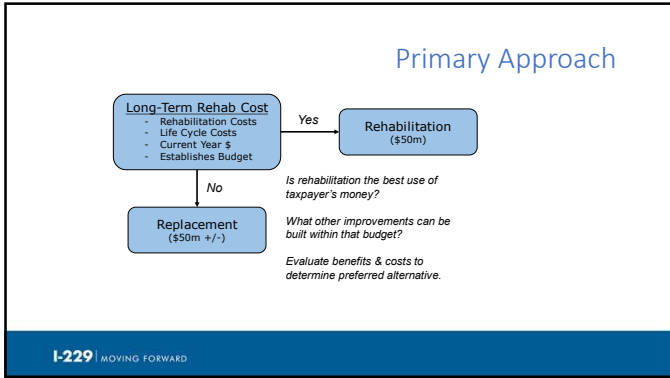
I-229 MOVING FORWARD

Proposed Action

Determine the most efficient improvement option, either rehabilitation or replacement, within the context of an EA/FONSI for I-229 between US 36 and US 59 in St. Joseph, MO.



I-229 MOVING FORWARD





- ### Stakeholder Meetings
- Regional Freight Summit
 - Chamber of Commerce
 - SJATSO (MPO) Staff
 - BNSF & UP Railroads
 - MPO Technical Cmt.
 - City Planning & Community Development
 - Frontier Casino
 - Hilliard
 - Downtown Partnership
 - Downtown CID
 - MPO Coordinating Cmt.
 - Public Works
 - City Council Working Session
 - Downtown Association
 - Mo-Tan Regional Council
 - Riverfront Development Consultant
 - Partnership for Success
 - Downtown Strategic Planning Committee
 - Chamber Manufacturers Mfg.
 - Rotary Club

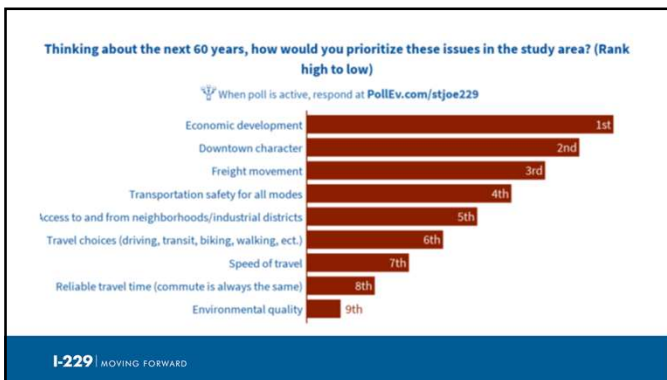


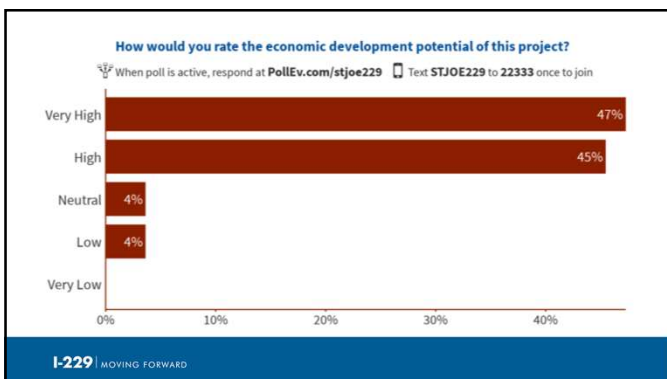
The **Future**
We want

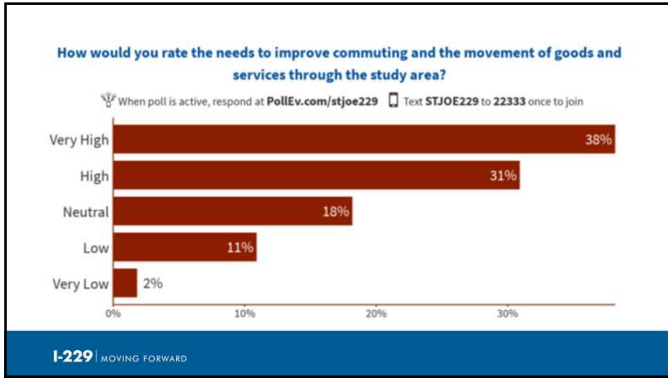
Public
Workshop

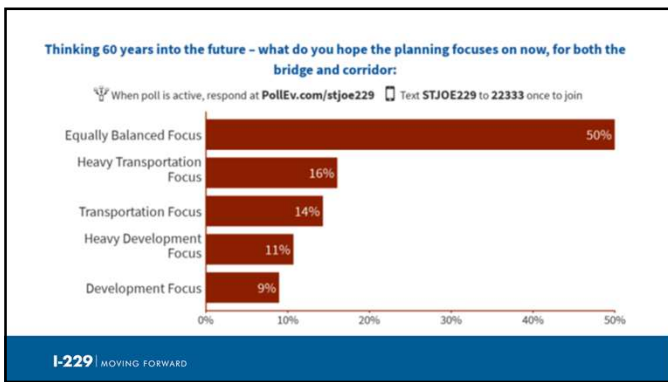
The **Infrastructure**
To support that future

I-229 MOVING FORWARD

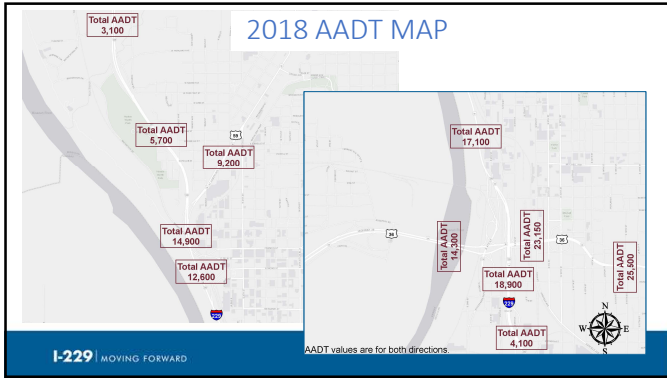


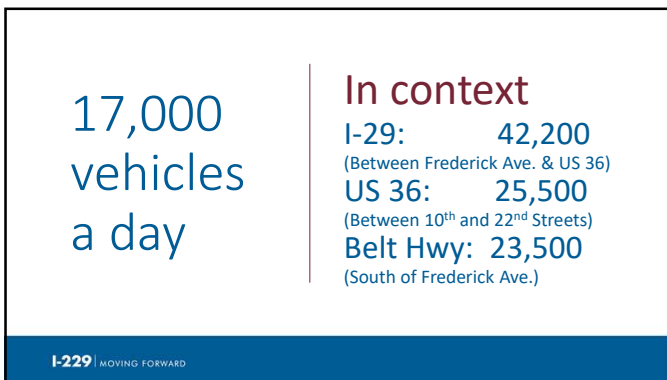


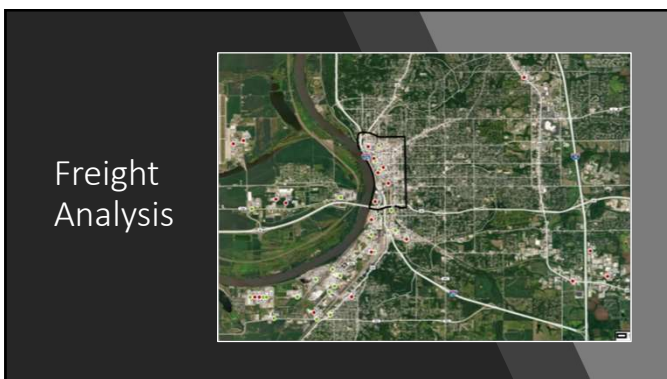













Environmental Concerns

- Wyeth Park
- Riverfront Trail
- Mandan Burial Mounds
- Old Town St. Joseph
- NRHP Sites
- Historic Ferry Crossing
- Landfill
- Other Hazardous Materials
- Floodplains



WATER | Concept + Imagery

Draft for discussion purposes only



- RIVERFRONT TRAIL (2.25 mi)**
 - Riverfront Trail
 - Lighting
 - Electrical Access
- ROBIDOUX LANDING + TRAIL CENTER**
 - Flexible Event Space
 - Playground
 - Fountain/Spray Ground
 - Urban Beach
 - Riverfront Promenade
 - Pedestrian Link to Downtown
 - Trail Center
 - Parking Facilities



DECEMBER 19, 2018




I-229 | MOVING FORWARD

California and Pony Express National Historic Trails


The City of St. Joseph Conceptual Design Charette

Agenda



National Park Service (NPS) Charrette
held 11/5/18 – 11/9/18


1868 Bird's Eye View of St. Joseph



Place: Missouri
 RR: RR
 Pony Express: Pony Express
 Location: Modern park at ferry landing
 Original town site, 1843
 NPS location, modern park at ferry landing

I-229 | MOVING FORWARD

IMAGINE ST. JOSEPH 2040

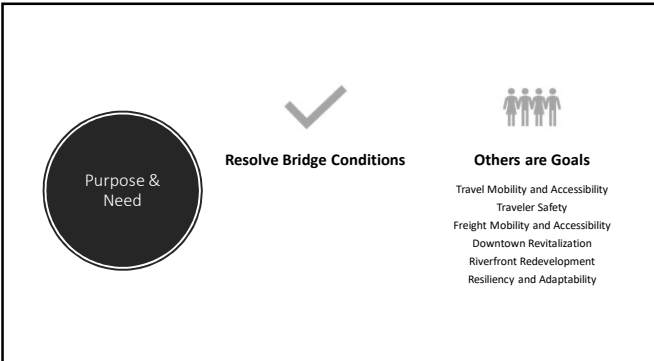


CREATE A BETTER PLACE

What "positive disruptions" would increase our performance in this strategy?

- The decommissioning of Interstate 229 and the vision of City leaders to use the riverfront for one of the most historic and exciting greenspace developments in Missouri – the new Missouri River Commons.
- A light-rail system connecting Kansas City and St. Joseph is built as a first phase that will ultimately also connect Omaha. This creates the first mega-region in the Midwest.
- Voters approve a general obligation bond to fund enhanced community amenities and residential infrastructure improvements.
- The City agrees to invest 1 percent of all new infrastructure spending for public art, and beautification, to ensure that all new infrastructure is both functional and inspiring.
- The City connects the Parkway System to downtown and extends it to the new riverfront development.
- The City, as part of its Capital Improvement Program, builds a multi-million dollar Youth Sports Complex attracting tournaments and teams throughout the Midwest.
- A new boutique hotel is developed downtown.
- A new conference and meeting facility is constructed that allows the community to pursue small conventions and association meetings.

I-229 | MOVING FORWARD



Purpose & Need

Resolve Bridge Conditions

Others are Goals

- Travel Mobility and Accessibility
- Traveler Safety
- Freight Mobility and Accessibility
- Downtown Revitalization
- Riverfront Redevelopment
- Resiliency and Adaptability

Initial Improvement Options

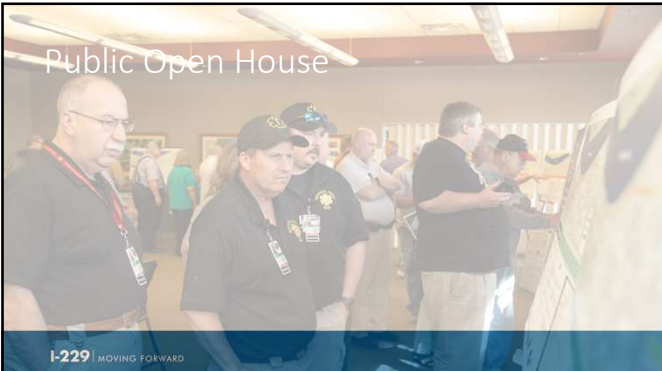
- No Build: Rehabilitate Existing
- TSM/TDM/Transit
- Repurpose Existing Structure
- Replace: Maintain Interstate Designation
- Replace: Eliminate Interstate Designations

Screening
Matrix




I-229 | MOVING FORWARD

Public Open House



I-229 | MOVING FORWARD

INTERSTATE OPTIONS
I-229



OVERALL EVALUATION STATUS ●●●

EVALUATION CRITERIA

- ENVIRONMENTAL: ●●●●●
- BENEFITS DOWNSTREAM: ●●●●●
- BENEFITS UPSTREAM: ●●●●●
- FISGAT: ●●●●●
- TRAVEL TIME AND SAFETY: ●●●●●
- PROGRIEBING: ●●●●●

PROS:

- Removal of the I-229 crossing bridge structure along the Missouri River
- I-229 construction would be less disruptive to the surrounding area
- I-229 would be a significant step in the state's effort to improve the transportation network
- Provides more space along the riverbank for access and/or development
- Provides "open space" of Missouri River

CONS:

- Construction to bridge across the Missouri would be reduced
- Potentially higher cost of engineering efforts to improve
- High cost potential due to property values
- Additional bridge structure elements and the cost
- Additional bridge structure elements and the cost

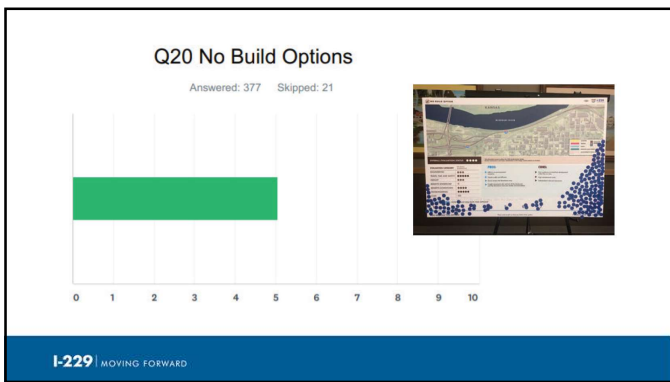
IT'S YOUR TURN: HOW WOULD YOU RATE THIS OPTION?

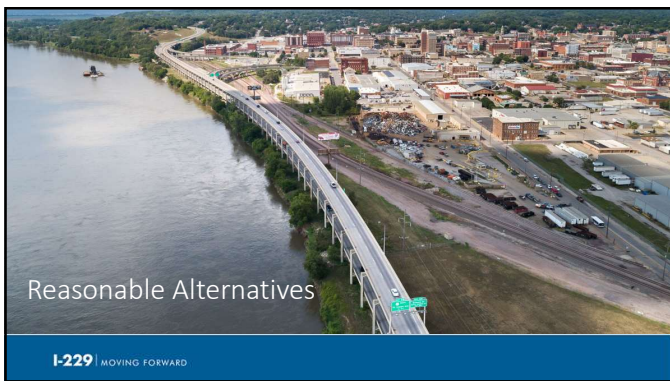
1 2 3 4 5 6 7 8 9 10

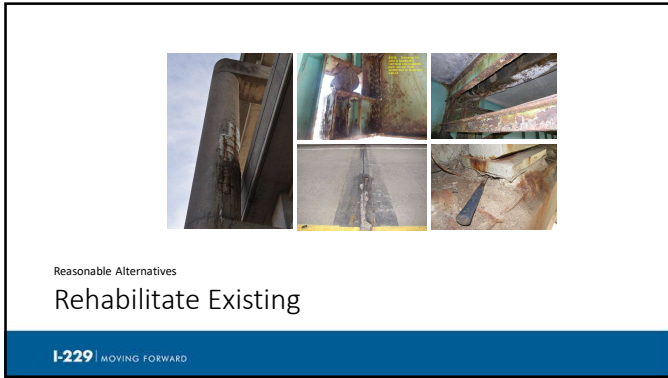
I DO NOT LIKE THIS OPTION I REALLY LIKE THIS OPTION

I-229 | MOVING FORWARD





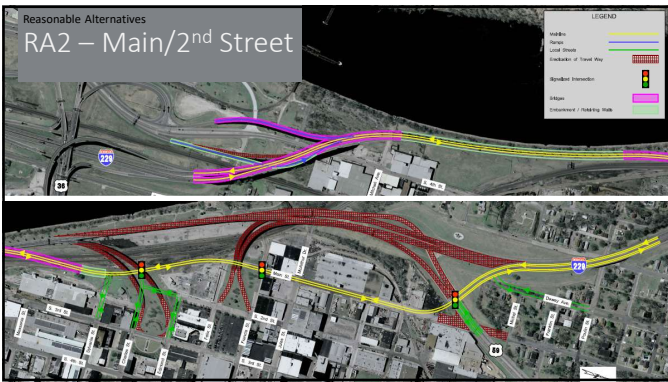




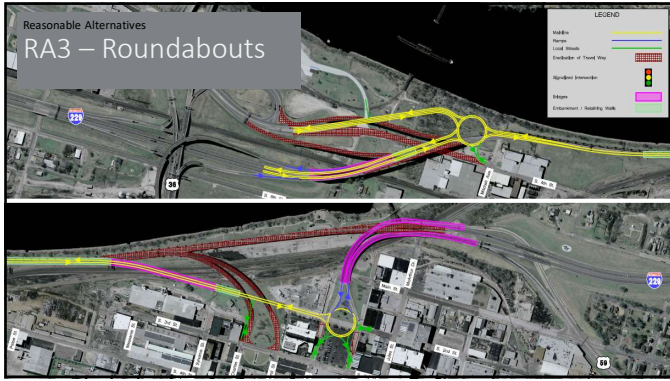




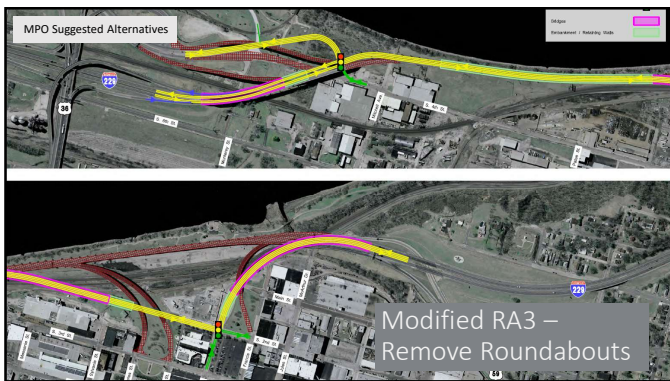


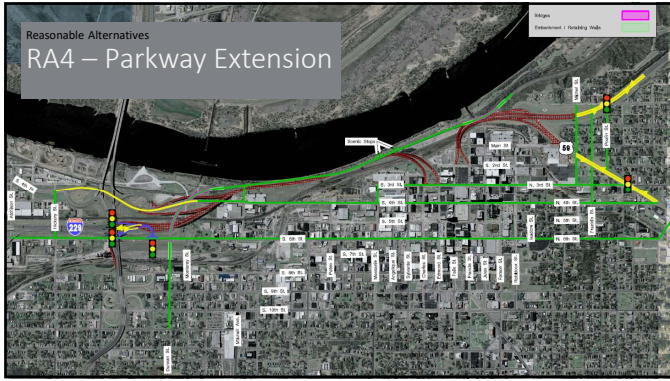




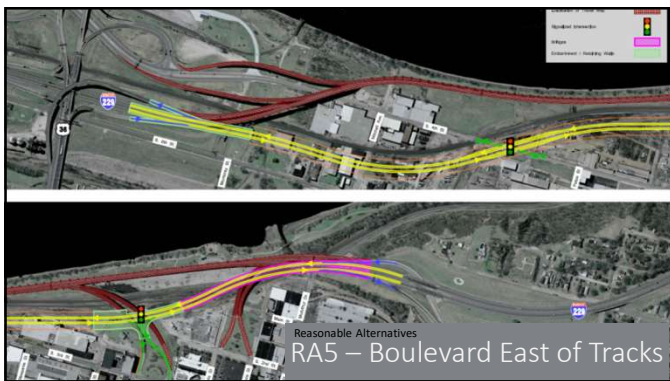















Next Steps

- Continued Stakeholder Outreach – October through November
- Archaeological Investigations - October
- Submit Preliminary EA for MoDOT Review – Late December
- De-Designation of Interstate - 2022



I-229 MOVING FORWARD



www.stjoe229.com

 stjoe229

 stjoe229

Email: contact@stjoe229.com

Phone: (888) 275-6636

I-229 MOVING FORWARD
