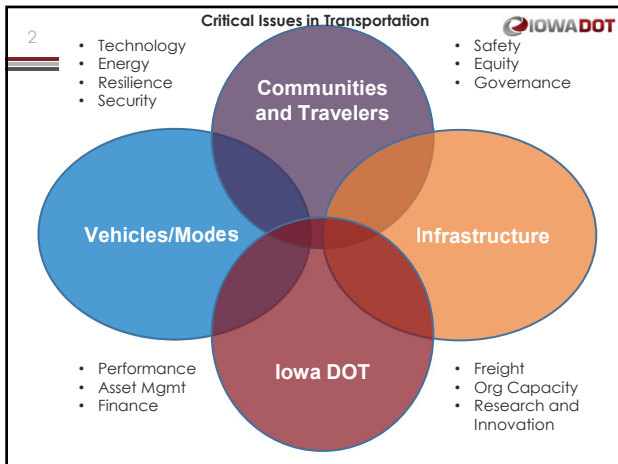




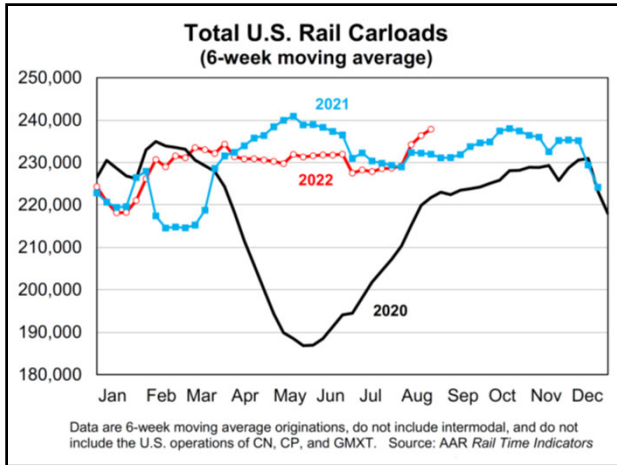
Iowa DOT: Perspectives from the Director

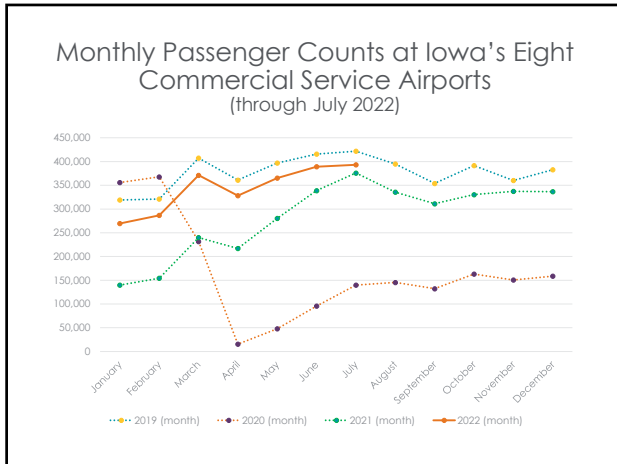
American Council of
Engineering Consultants of Iowa
2022

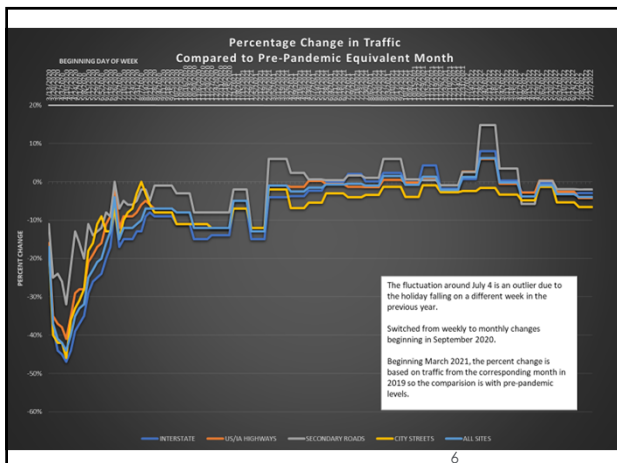










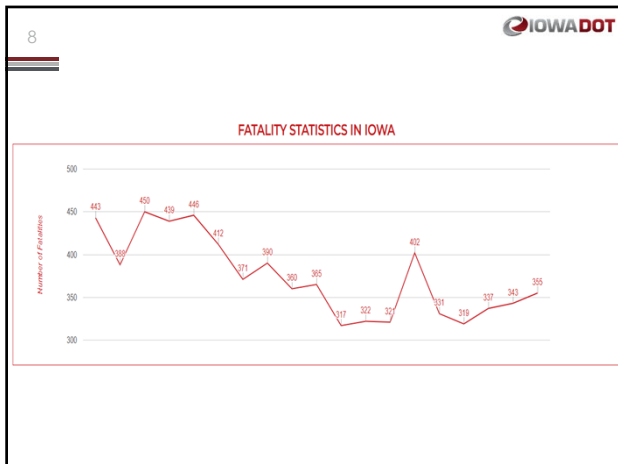




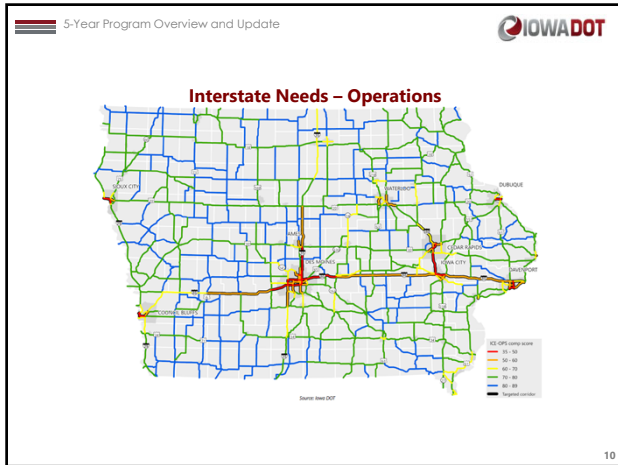
Critical Challenges

**American Council of
Engineering Consultants of Iowa
2022**

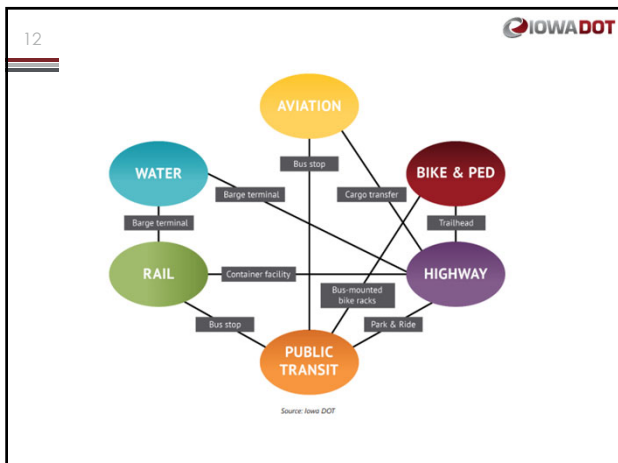


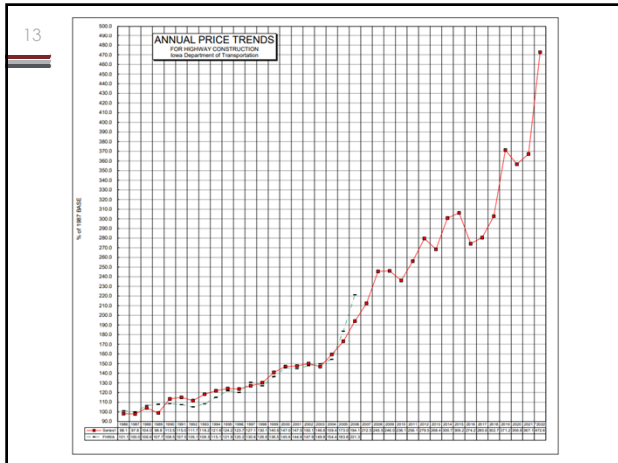












IOWA DOT

We Need You!

American Council of
Engineering Consultants of Iowa
2022



16



Highway Formula Programs (millions)

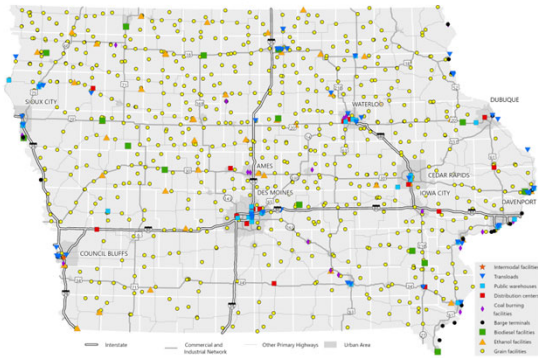
Program	2021 (actual)	2022	2023	2024	2025	2026
National Highway Performance	307.4	365.8	373.1	380.6	388.2	395.9
Surface Transportation Block	157.2	177.9	181.5	185.1	188.8	192.6
Highway Safety Improvement	28.1	35.8	36.6	37.5	38.3	39.2
Rail-Highway Crossings	5.7	5.7	5.7	5.7	5.7	5.7
Congestion Mitigation/Air Qual.	11.8	12.3	12.6	12.8	13.1	13.3
National Highway Freight	18.2	17.0	17.4	17.7	18.1	18.4
Metro Planning	2.1	2.6	2.7	2.7	2.8	2.8
State Planning and Research	10.6	*	*	*	*	*
Highway Infra/Bridge (through appropriation, not authorized)	43.6	37.9				
Bridge Formula Program		93.4	93.4	93.4	93.4	93.4
Carbon Reduction		15.9	16.2	16.5	16.8	17.2
PROTECT		18.0	18.4	18.8	19.1	19.5
Total	584.7	782.4	757.5	770.8	784.4	798.2
National EV Charging		10.3	10.3	10.3	10.3	10.3

* Continues as offset from core programs

17



3.3B: Freight intermodal facilities

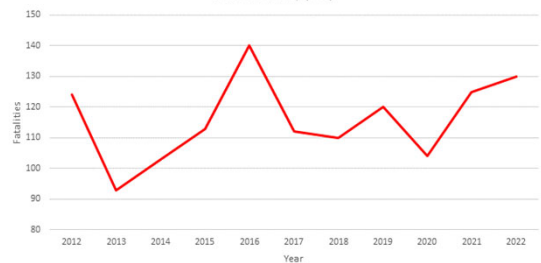


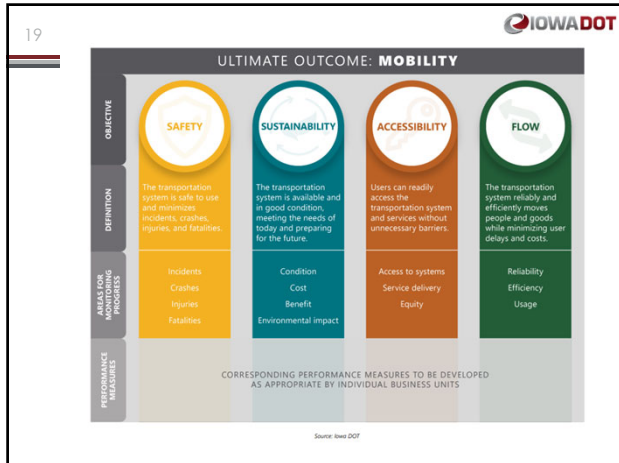
This map is not a comprehensive representation of all of Iowa's freight generating facilities. Some existing facilities may not be operational and new facilities may not be represented. Source: Iowa DOT, Commodity Guide, Rail companies, U.S. Army Corps of Engineers.

18



Speeding-related Fatalities Year-to-Date (9/20)







21

IOWADOT

5-Year Goals

-  **Improve Transportation System Safety & Performance**
Outcomes include: zero fatalities in work zones, total traffic fatalities significantly reduced, increased efficiency, reliability, resiliency, and condition of our transportation system
-  **Improve Customer Service**
Outcomes include: greater levels of customer satisfaction across all programs and services
-  **Advance Workforce for Future Challenges & Opportunities**
Outcomes include: engaged and empowered employees, increased diversity, equity, and inclusion, and steady reductions in turnover rate (non-retirement)
-  **Secure Stable & Sustainable Funding**
Outcomes include: implemented funding strategies, ensured diversified funding mechanisms, and reduced technical debt (e.g., legacy systems)
-  **Grow Innovation**
Outcomes include: adopted smart technologies, culture of innovation, and modernized systems

22

IOWA DOT

23

IOWA DOT

1 Year Objectives for 2022

- 1) Deploy Proactive Traffic Management
- 2) Improve Work Zone Safety
- 3) Improve the Project Delivery Cycle
- 4) All Employees Trained in Customer Service Principles
- 5) Remodel the External DOT Website
- 6) Create a more Diverse, Equitable, and Inclusive Culture

24

IOWA DOT

25