

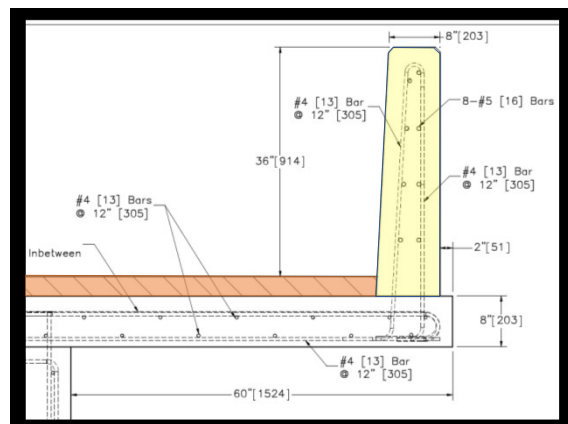
Reminder:

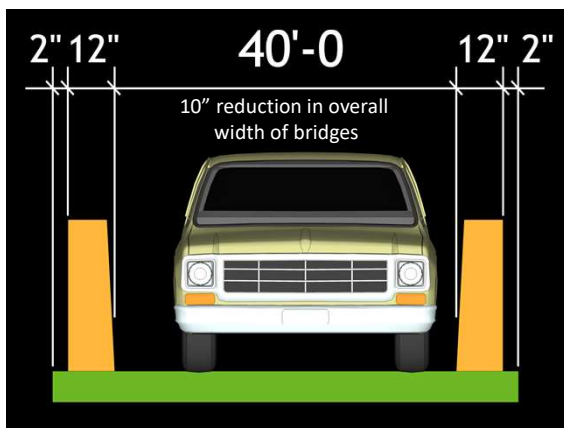
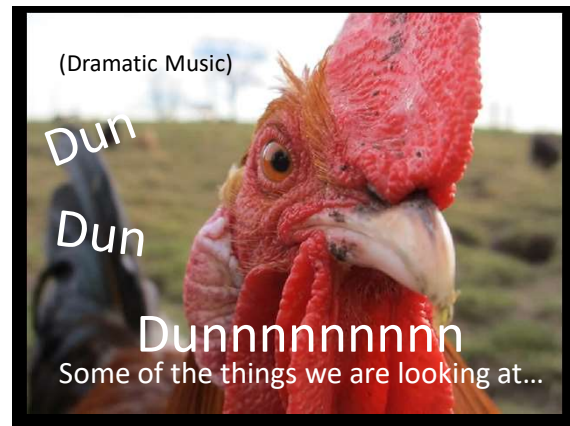
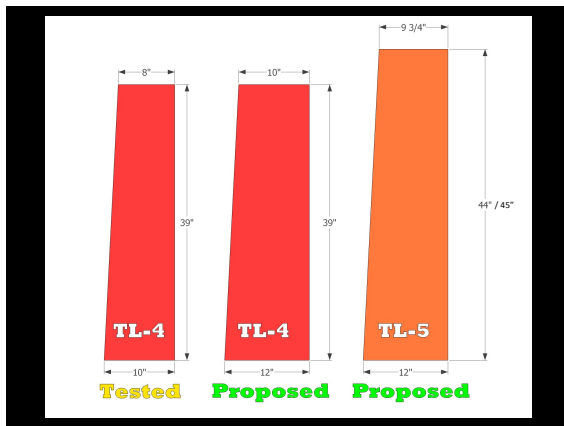
- On October 1st – AASHTO 8th edition
- All projects STARTED after October 1st will use the 8th edition for design
- Development lengths and splices
- Standards can be used “as is” and will be updated as soon as possible



New Barrier Rails

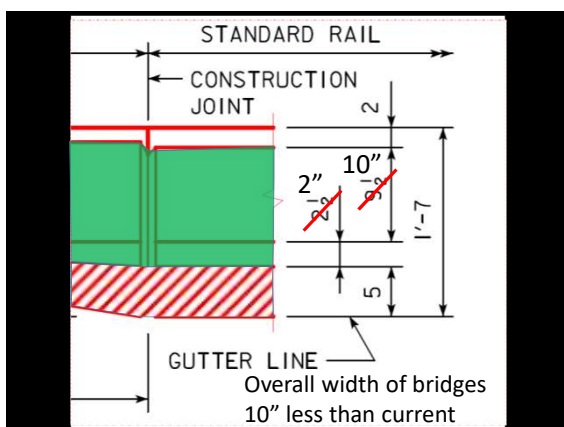
- New TL-4 and TL-5 rails (new end sections) to meet MASH
- Projects let after December 2019
- The TL-4 rail was recently tested (August 21)





Standards update under way

- New pedestrian culverts CIP and precast (zero degree skew only)
- New LRFD precast deck panels sheets for BT beams (& standard)
- Rolled steel beam bridge changes
- Semi integral standards
- Culvertcalc software update



Future Standards updates

Standards affected by the barrier rail and development length changes

- Barrier rails
- CSS and PCCB (CSS redesign?)
- Rolled steel beam bridge
- Semi integral standards
- All Culverts (& new flared end section for single CIP barrels)

Combining standards - stainless

- J40-06 and J40-14 CCS
- J44-06 and J44-14 CCS
- H40-06 and H40-14 PPCB
- H44-06 and H44-14 PPCB
- RS40-10 and RS40-14 rolled steel
- Summary sheets
- Development lengths / splices
- New bridge widths (new barriers)

Misc.

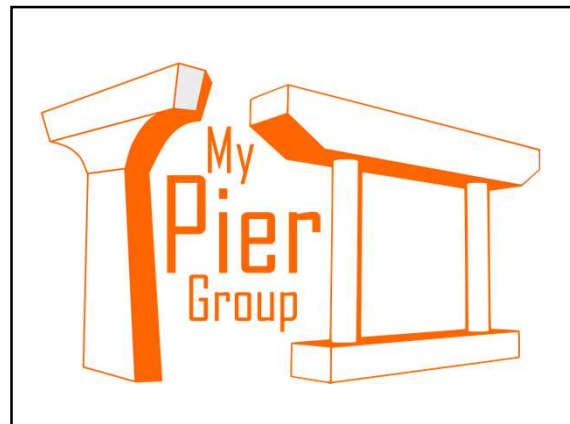
Fonts and case

BIM – 3D model only plans?

Future of standards – 3D models?

County standards

- Last standards to be updated
 - Rail types?
 - Decrease number of standards?
 - Out source standards?
 - Swap agreement with counties
- Federal-aid swap for state funds (Swap)



Methods

- Suggestions for change
- Simplification – is it possible?
- Other?

