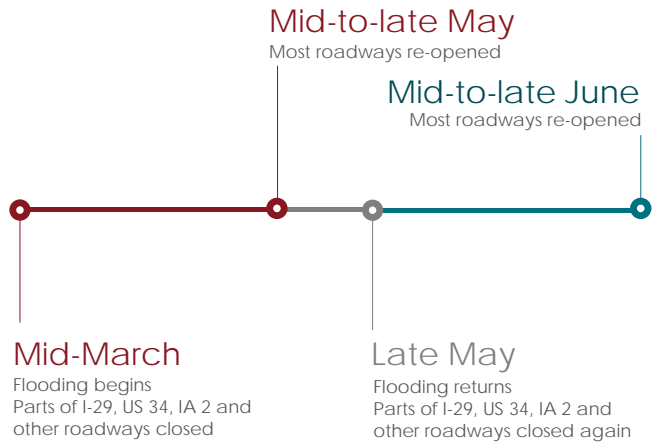


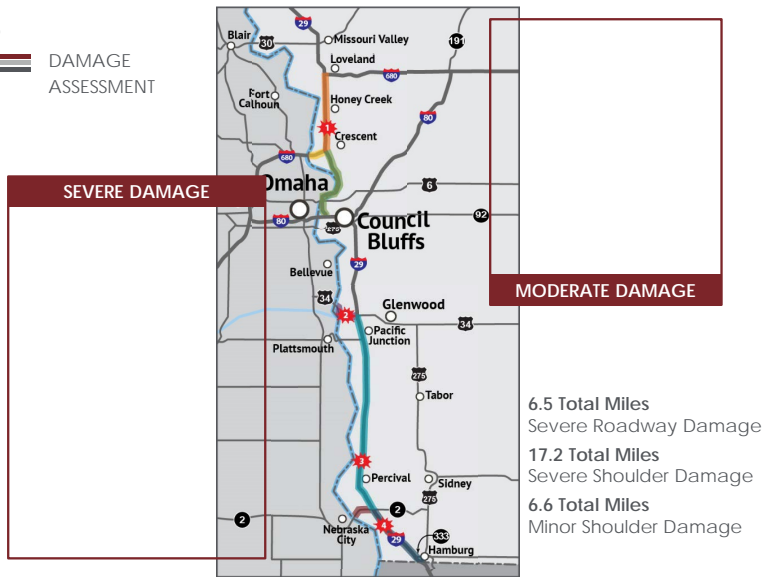


2019 Flood Response & Recovery
Iowa DOT / FHWA / ACEC Transportation Conference
September 11, 2019
M.J. "Charlie" Purcell, Project Delivery Division Director

General timeline of events



DAMAGE ASSESSMENT



DAMAGE ASSESSMENT



Interstate 29
North of I-680

- 0.2 Mile Severe Roadway Damage
- 2.4 Miles Severe Shoulder Damage
- 1.4 Miles Minor Shoulder Damage
- 1** Culvert Damage

DAMAGE ASSESSMENT



Interstate 680

- 1.5 Miles Severe Shoulder Damage

DAMAGE ASSESSMENT



Interstate 29
I-680 to Council Bluffs

- 1.0 Mile Severe Shoulder Damage
- 1.5 Miles Minor Shoulder Damage



U.S. 34

- 2.0 Miles Severe Roadway Damage
- 5.2 Miles Severe Shoulder Damage
- 0.3 Mile Minor Shoulder Damage
- 2** 1,000' Levee Breach, multiple contractors



Iowa 2

- 0.1 Mile Severe Shoulder Damage
- 1.0 Mile Minor Shoulder Damage
- Fast-tracked solution to prepare driving surface



Interstate 29 U.S. 34 to Missouri

- 4.3 Miles Severe Roadway Damage
- 7.0 Miles Severe Shoulder Damage
- 2.4 Miles Minor Shoulder Damage
- 3** Severe damage north of Percival
- 4** Structural damage to Bridges at MM1.4 & MM 8.5

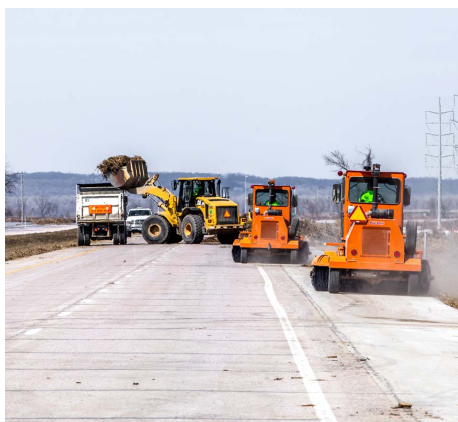
Mobilize, Divide, Conquer

- Roles and Responsibilities
- Working Groups
 - Emergency Relief funding
 - Resiliency
 - DOT/USACE Coordination
 - Public Relations
- Meetings
- Document the process: Flood Recovery Plan



Fast-tracked Recovery & Repairs

- Empowered District forces
- Mobilizing, incentivizing contractors
- Leveraging technical assistance when needed

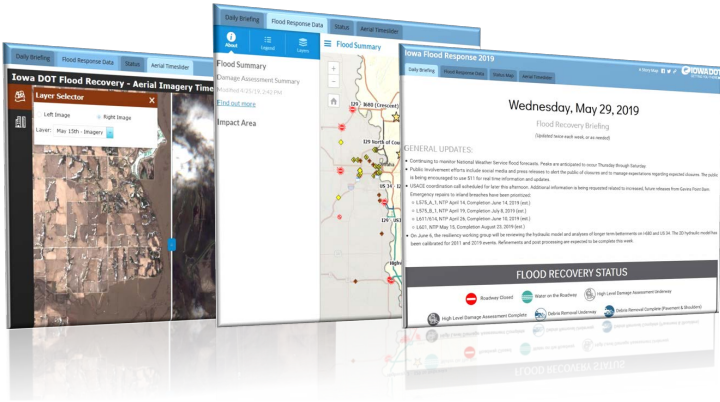


Communication & Coordination

- Internal DOT Teams
- Multi-state DOTs - IA, NE, KS, MO
- FHWA
- USACE
- National Weather Service
- Elected officials
- Impacted towns/stakeholders
- Emergency managers
- First responders
- General and traveling public
- Consultants and contractors
- Railroads
- Local Levee Districts
- Media



GIS StoryMap



Flood Recovery Briefings

U.S. 34

CURRENT STATUS:

- This segment CLOSED on May 28, 2019, due to fast moving water over the roadway

TARGET:

- Undefined

WORK COMPLETED:

- Damage assessments
- Box culvert evaluation
- Paving on westbound and eastbound lanes

WORK UNDERWAY:

- Prior to closure, Western Dredging was working to repair the USACE levee breach in this area
- Settlement improvement analysis including shoulder armoring
- Installing berm on south side of EB U.S. 34 to deter further damage

[Click to enlarge]

May 15, 2019 May 15, 2019 May 28, 2019 - 511a.org

www.floods2019.iowa.gov

DOT Maps & Graphics



Social Media



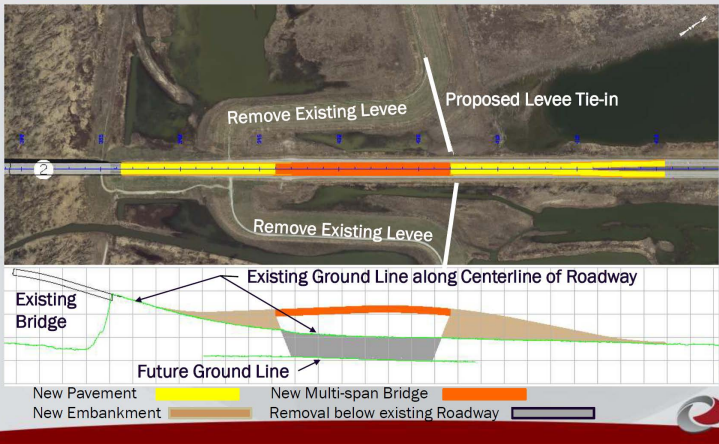
I-29 Corridor 2D Hydraulic Model

Flooding near Nebraska City, March 31, 2019



Iowa 2 Overflow Structure

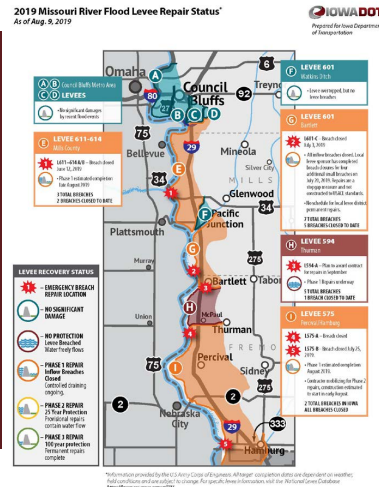
Conceptual Plan and Profile



I-680 & I-29 Flexamat Betterment



Repairing Levee Breaches



Levee repair status map

Keys to success

- Teamwork
- Focus on mobility
- Creative solutions
- Communication
- Risk management
- Hard work and determination



THANK YOU



SPECIAL THANKS TO

