

The I-80 / I-380 Interchange Reconstruction
3D Visualization Project



Collaboration Team

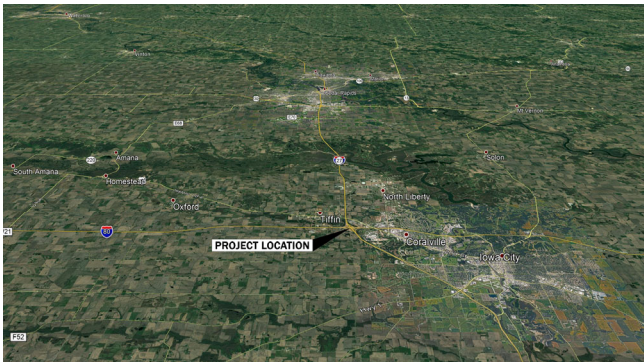


Visualization In
Community
Outreach

- Public Concerns
- Innovative Design
- Meaningful Questions



Visualization In Community Outreach



I80/I380 Visualization Project Overview

Reconstruction of the Cloverleaf Interchange to a Turbine Interchange



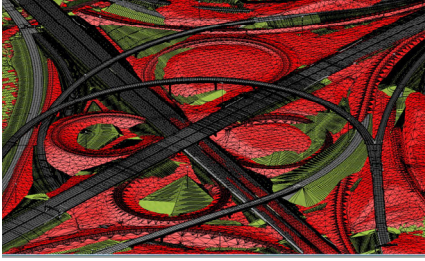
I80/I380 Visualization Project Overview

Existing Cloverleaf Configuration



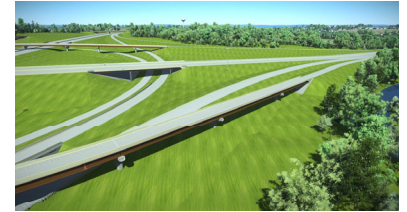
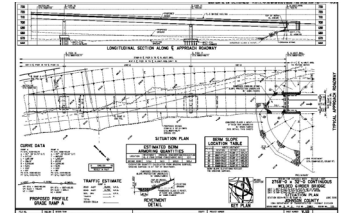
Design vs. 3D Visualization

- Advancements In Technology
- 2D & 3D Information
- Coordination & Prioritization



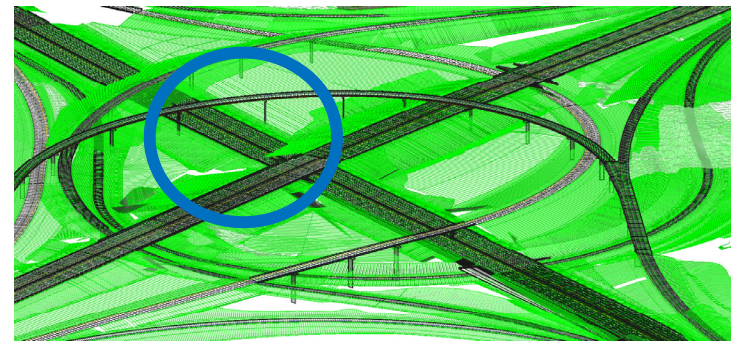
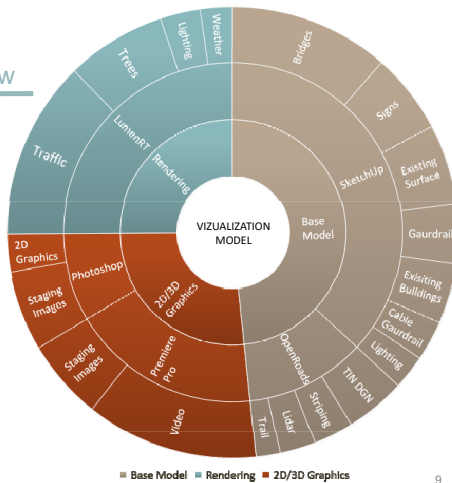
Design Models & Visualization Models

- Design Models
 - Plan Sheets
 - Cross Sections
- Visualization Models
 - Build On Design Models
 - Verticality to 2D information
 - Clarifying Public Imagination
- Developed in a Visualization Model
 - Bridge Bems
 - Traffic Signs
 - Bridge Piers
 - Guard Rails



Visualization Software Workflow

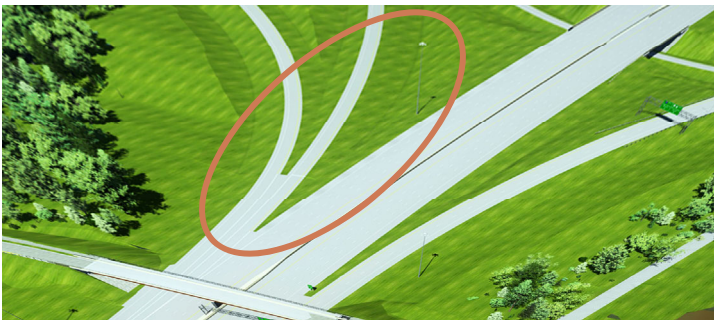
- No one size fits all
- Combination is key
 - Base Model
 - SketchUp
 - OpenRoads
 - 2D/3D Graphics
 - Photoshop
 - PremierePro
 - Rendering
 - LumenRT



What Makes Up The Model

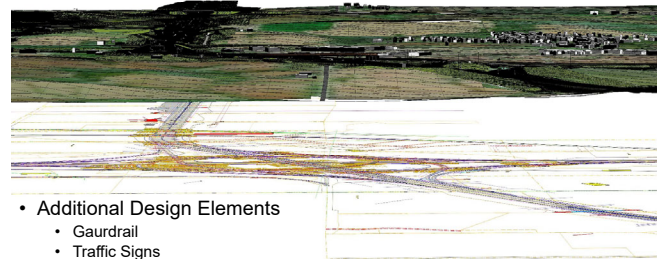
- Overlapping TIN files
- Triangles

Blending The Models

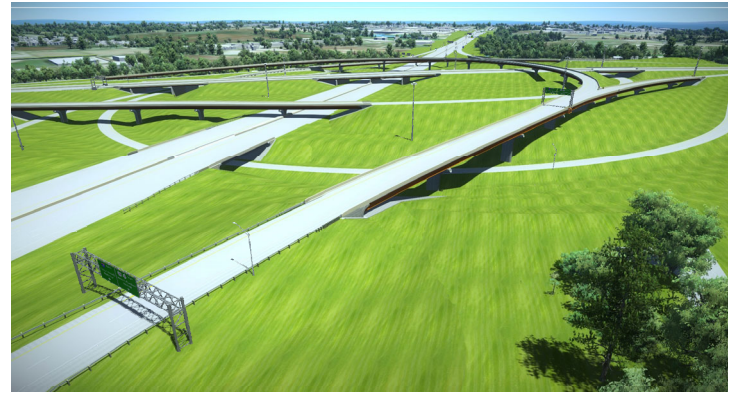
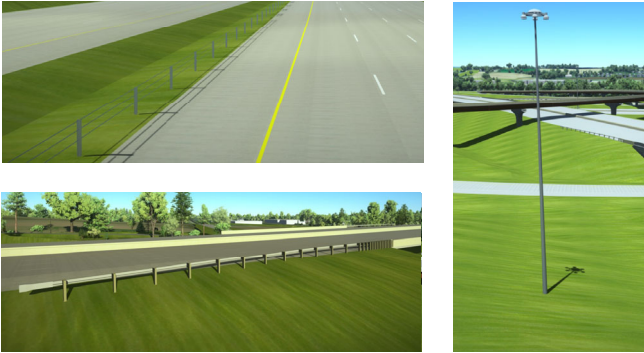


Customizing The Model

- Additional Design Elements
 - Gaurdrail
 - Traffic Signs
 - Lighting
 - Surrounding Buildings
- Upgrading 2D information



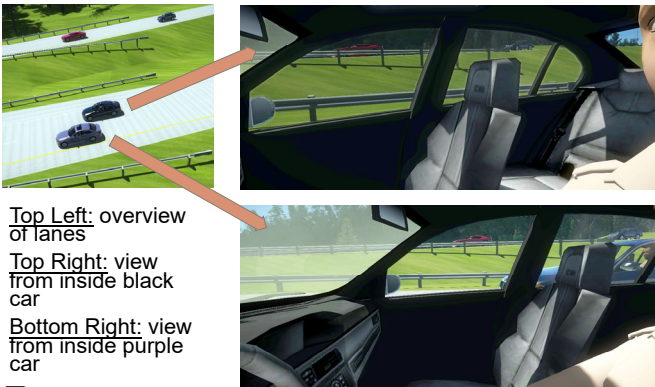
Customizing The Model & Adding Context



Adding Details

- Bentley; TIN Files, OpenRoads, LumenRT
- SketchUp

Visualization Solutions



- Top Left: overview of lanes
- Top Right: view from inside black car
- Bottom Right: view from inside purple car

Drive Through Animation



Common Oversized Vehicle



Common Oversized Vehicles



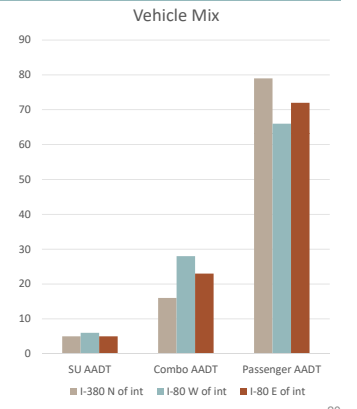
Creative Applications of Technology

What can we do with a 3D visualization model - before & after



Traffic Animation

- Simulation
- Vehicle type by volume
- VISSIM
- Transmodeler



Drive Through Video



Traffic Animation Model



Creative Applications of Technology

What can we do with a 3D visualization model - high level staging video



Creative Applications of Technology

What can we do with a 3D visualization model - virtual reality



Lessons Learned - What happens when the design changes?

- Preliminary to Final design
- Clear communication
- Updating the model
 - Grading
 - Pavement Markings
 - Signs & Lights
- Reprocessing the model
- Understanding the Software



Moving Forward - Benefits of Visualization

Shared understanding of the project, always a more complete picture

QUESTIONS?

